

RESEARCH

Open Access



Impact of physical activity, sedentary behaviour and muscle strength on bone stiffness in 2–10-year-old children-cross-sectional results from the IDEFICS study

Diana Herrmann¹, Christoph Buck², Isabelle Sioen³, Yiannis Kouride⁴, Staffan Marild⁵, Dénes Molnár⁶, Theodora Mouratidou⁷, Yannis Pitsiladis⁸, Paola Russo⁹, Toomas Veidebaum¹⁰, Wolfgang Ahrens^{1,11*} and on behalf of the IDEFICS consortium

Abstract

Background: Physical activity (PA), weight-bearing exercises (WBE) and muscle strength contribute to skeletal development, while sedentary behaviour (SB) adversely affects bone health. Previous studies examined the isolated effect of PA, SB or muscle strength on bone health, which was usually assessed by x-ray methods, in children. Little is known about the combined effects of these factors on bone stiffness (SI) assessed by quantitative ultrasound. We investigated the joint association of PA, SB and muscle strength on SI in children.

Methods: In 1512 preschool (2- < 6 years) and 2953 school children (6–10 years), data on calcaneal SI as well as on accelerometer-based sedentary time (SED), light (LPA), moderate (MPA) and vigorous PA (VPA) were available. Parents reported sports (WBE versus no WBE), leisure time PA and screen time of their children. Jumping distance and handgrip strength served as indicators for muscle strength. The association of PA, SB and muscle strength with SI was estimated by multivariate linear regression, stratified by age group. Models were adjusted for age, sex, country, fat-free mass, daylight duration, consumption of dairy products and PA, or respectively SB.

Results: Mean SI was similar in preschool (79.5 ± 15.0) and school children (81.3 ± 12.1). In both age groups, an additional 10 min/day in MPA or VPA increased the SI on average by 1 or 2 %, respectively ($p \leq .05$). The negative association of SED with SI decreased after controlling for MVPA. LPA was not associated with SI. Furthermore, participation in WBE led to a 3 and 2 % higher SI in preschool ($p = 0.003$) and school children ($p < .001$), respectively. Although muscle strength significantly contributed to SI, it did not affect the associations of PA with SI. In contrast to objectively assessed PA, reported leisure time PA and screen time showed no remarkable association with SI.

Conclusion: This study suggests that already an additional 10 min/day of MPA or VPA or the participation in WBE may result in a relevant increase in SI in children, taking muscle strength and SB into account. Our results support the importance of assessing accelerometer-based PA in large-scale studies. This may be important when deriving dose–response relationships between PA and bone health in children.

Keywords: Bone stiffness, Physical activity, Sedentary behaviour, Accelerometer, Quantitative ultrasound, Quantitative evidence, Weight-bearing exercise, Muscle strength

* Correspondence: ahrens@bips.uni-bremen.de

¹Department of Epidemiological Methods and Etiological Research, Leibniz Institute for Prevention Research and Epidemiology - BIPS, Achterstr. 30, 28359 Bremen, Germany

¹¹Faculty of Mathematics and Computer Science, Bremen University, Bibliothekstraße 1, 28359 Bremen, Germany

Full list of author information is available at the end of the article

Background

High levels of physical activity (PA) have been found to optimize skeletal development early in life, thus preventing age-related bone loss and osteoporotic fractures [1–4]. The positive impact of moderate (MPA), vigorous (VPA) or moderate-to-vigorous PA (MVPA) on bone health in children has been demonstrated in several observational studies [5–11]. In school-based interventions an osteogenic effect of WBE such as jumping or ballgames has been observed. The effect of high-impact PA has been largely explained by the muscle force and strength acting on bone [2, 12–18]. Thus, muscle strength and muscle mass play an important role in bone development during growth [19].

International PA guidelines for children from the World Health Organization (WHO) recommend one hour of MVPA per day, including VPA or bone-strengthening exercises on at least three days a week [20]. However, a large number of studies have indicated that most children spend insufficient time in MVPA [6, 7, 21–23]. The time previously spent in MVPA may be replaced by the increasing time children spend in sedentary behaviours such as watching television or playing computer games that may adversely affect bone health [5, 24, 25]. According to previous studies, the adverse effect of sedentary behaviours on bone health may be counteracted by additional high-impact PA [26, 27].

The variety of methods for assessing and operationalizing PA and bone health hamper the comparison of studies, particularly for investigating consistent dose–response relationships and bone-related PA recommendations. This is further complicated by the fact that usually only the isolated osteogenic effect of either habitual PA, different types of WBE or sedentary behaviours has been examined. The osteogenic effect of different PA intensities combined with sedentary behaviour in children is poorly investigated. In particular, there is a lack of quantitative evidence on the association of PA and WBE with bone health in children younger than five years [6].

In the IDEFICS study (Identification and prevention of dietary- and lifestyle- induced health effects in children and infants), a large European sample of children aged 2–10, bone stiffness index (SI), as an indicator for bone health, was measured using quantitative ultrasound (QUS) [28]. We comprehensively assessed habitual PA levels, sedentary behaviour and physical fitness, which made it possible for us to simultaneously investigate the association of these lifestyle factors with SI in children. In detail, we examined the effect of objectively measured average PA levels, SED, LPA, MPVA, VPA and MVPA as well as of parental-reported leisure time PA, WBE and screen time on SI in preschool (2- < 6 years) and school children (6–10 years). We additionally investigated the association of muscular fitness and fat-free mass (FFM)

on SI separately as well as in combination with PA and sedentary behaviour. Both, muscular fitness and FFM have been used as indicators for muscle strength and muscle mass in previous studies [8, 29–31].

Methods

Study sample

The IDEFICS study, a prospective population-based cohort study, examined more than 18,000 2–11-year-old children, from eight European countries (Sweden, Germany, Hungary, Italy, Cyprus, Spain, Belgium and Estonia) to investigate associations of biological and behavioural factors on lifestyle diseases. The study was conducted according to the standards of the Declaration of Helsinki. All participating centres obtained ethical approval from their responsible authority. Participating children and their parents provided oral and written informed consent for each examination and for the storage of personal data. Children and their parents were allowed to opt out of single examination modules, e.g. blood collection, accelerometry or QUS measurements. The study design and examinations done have been described in detail elsewhere [32, 33]. Our sample is based on 16,228 children examined at baseline (T0, 2007/08), and 2555 newly recruited children examined at follow-up (T1, 2009/10).

The exclusion criteria and the number of children of the final analysis are summarized in Fig. 1. We considered children 2–10 years of age with their first QUS measurement at T0 ($N = 7539$) or T1 ($N = 3842$). We excluded children with invalid QUS measurements ($N = 341$) and with an indication of impaired bone health, i.e. with diseases or receiving medical treatments affecting the bone ($N = 226$). Further, we excluded children without accelerometer measurements ($N = 5286$), no parental report on participation in a sports club and no information on WBE ($N = 64$), leisure time PA ($N = 280$) or screen time ($N = 130$). Children were also excluded, if data on FFM ($N = 34$) and consumption of milk and dairy products (MDP) ($N = 118$) were missing. In school children, we considered only children who participated in fitness tests including jumping distance and handgrip strength. These restrictions left 1512 preschool and 2953 school children for analysis.

Bone stiffness

SI was measured on the left and right calcaneus using QUS (Achilles Lunar Insight™ GE Healthcare, Milwaukee, WI, USA) and was based on two parameters, broadband ultrasound attenuation (dB/MHz) and speed of sound (m/s) [34]. QUS measurements are correlated with DXA measurements and are used as a valid tool for indicating the risk of osteoporotic fractures [35, 36]. In children, however, the clinical usefulness of QUS has not yet been investigated,

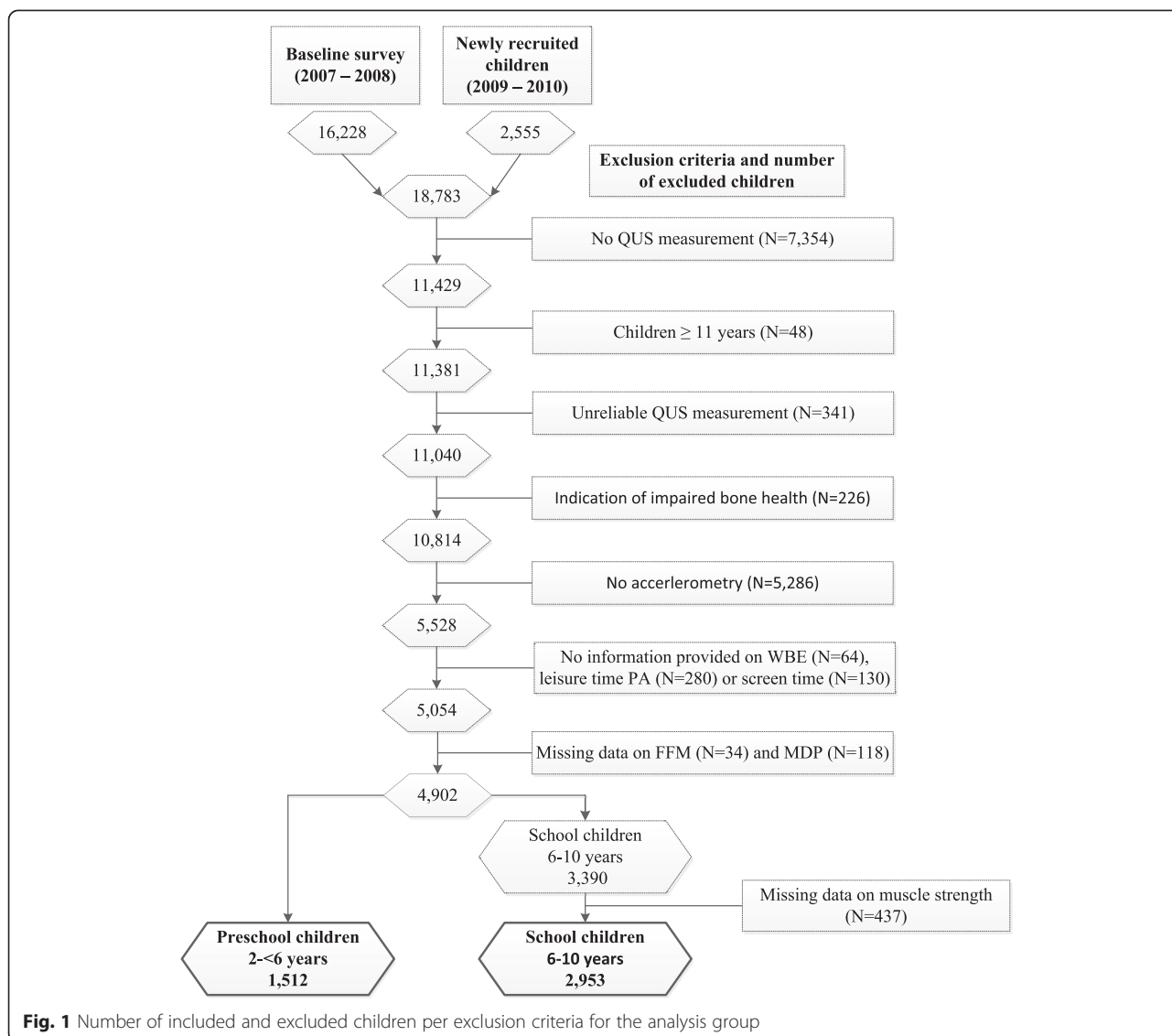


Fig. 1 Number of included and excluded children per exclusion criteria for the analysis group

and comparison studies showed inconsistent correlations with DXA [34, 37]. The detailed method and application of QUS is described elsewhere [28, 38, 39]. To examine the reliability of Achilles devices, 60 children were repeatedly measured on either the right ($N = 30$) or left ($N = 30$) calcaneus. The precision of Achilles measurements was calculated using the percent root-mean-square coefficient of variation (CV_{RMS}) in accordance with the Conference of Radiation Control Program Directors (CRCPD) Task Force on Bone Densitometry [40]. CV_{RMS} for SI was 9.2 % on the right foot and 7.2 % on the left foot. Furthermore, in our sample, the absolute difference of the left and right SI measurement was on average 10.3 units (standard deviation 12.5 units) and ranged from 0 to 112 units. A small reliability study that was conducted in a convenience sample ($N = 91$) based on five different Achilles devices used in the IDEFICS study confirmed the significant

discrepancy of the SI measurements between the left and right foot (multilevel regression analysis: $\beta = 0.45$, $p = 0.05$, unpublished data). To control for this discrepancy we set a limit for the absolute SI difference between SI of the left and right calcaneus and excluded 3 % of the QUS sample having the highest SI difference (97th SI percentile: 45 units SI difference). We calculated the mean SI of both feet as a proxy for bone status of the lower limbs and hip.

Physical activity and sedentary behaviour

In the IDEFICS study, PA was objectively measured using Actigraph uniaxial accelerometers (ActiTrainer or GT1M; Actigraph, LLC, Pensacola, FL, USA) in a subgroup of about 9000 children. Both types of accelerometers have been observed to measure comparable MVPA levels. However, the authors noted the lower comparability for lower PA levels, thus results should be

interpreted carefully [41]. Because the number of accelerometer was limited in the IDEFICS study, accelerometers could not be offered to all children. We had no selection criteria for the distribution of an accelerometer. If an accelerometer was available and could be offered to the child, the child was happy to wear it. Sociodemographic variables did not vary between children who wore an accelerometer and children who did not. Thus, we assume that the distribution of accelerometers was randomized and the results are not systematically distorted. Children had to wear the device on their right hip and had to take it off during water-based activities and bedtime. Data were considered valid when the child wore the accelerometer for three consecutive days, including one weekend day, for at least six hours per day. In our analysis, we used accelerometer data with 60 s (s) epoch. Non-wearing time was defined as 20 min or more of consecutive zero counts [21]. The average PA levels of the children were defined by counts per minute (cpm). Intensity levels were classified as sedentary time (SED, ≤ 100 cpm), LPA (>100 - < 2296 cpm), MPA (≥ 2296 - < 4012 cpm), VPA (≥ 4012 cpm) and MVPA (≥ 2296 cpm) based on the cut-off values proposed by Evenson that are published by Trost et al., 2011 [42]. For each intensity level the cumulative duration was calculated in minutes per day. The total valid wearing time of the device was assessed and expressed as average hours per day.

In addition to the objectively measured PA, the child's parental-reported PA and sedentary behaviour were considered in our analysis. Therefore, children's WBE, leisure time PA and screen time were reported by parents using a questionnaire. The variable WBE was based on the two questions 1) "Is your child a member of a sports club?" (response options: yes / no) and 2) "What kind of sport does your child do in a sports club?" If a child participated in sport club activities, four types of sport typical for each respective country and an open category to record other sports that were not listed were offered as response options. All reported types of sport were classified according to their loading and categorised into: (i) moderate or high mechanical loads on the lower limbs (ballgames, gymnastics, dancing, skating, martial arts, and athletics), and (ii) no or low mechanical loads (swimming, biking and horseback riding). The latter also included children for whose parents answered that they did not participate in sports club activities in question 1 (no sports).

The variable leisure time PA was based on the "Outdoor Playtime Recall Questions" [43]. Parents were asked how many hours (h) and minutes (m) their child spent playing outdoors on a typical weekday (weekd_h, weekd_m) and weekend day (weeken_h, weeken_m) the previous month. In addition, parents were asked

how many hours (club_h) and minutes (club_m) per week the child spent doing sport in a sports club. Finally, the variable leisure time PA was calculated as $5 * (\text{weekd_h} + \text{weekd_m}/60) + 2 * (\text{weeken_h} + \text{weeken_m}/60) + (\text{club_h} + \text{club_min}/60)$ and expressed as hours per week.

Sedentary behaviours, such as watching TV or playing computer games were used as a proxy for reported sedentary time [27]. Parents were asked to recall the usual duration their child watched (i) TV, videos, and DVDs, and (ii) the duration their child used the computer and game console on a normal weekday and weekend day. For both questions, six response categories were offered and converted into the following scoring system: not at all =0, <30 min =1, <1 h =2, 1- < 2 h =3, 2-3 h =4, and >3 h =5. Screen time was calculated separately for weekdays (weekd_score) and weekend days (weeken_score) by adding up the converted responses of questions (i) and (ii). The total screen time in hours per week was calculated as $[(\text{weekd_score} * 5) + (\text{weeken_score} * 2)]$.

Assessment of muscle strength

Physical fitness tests were conducted only among school children and adapted from the ALPHA (Assessing Levels of Physical Activity) and FITNESSGRAM test battery [29, 44, 45]. Jumping distance and handgrip strength were considered to indicate muscle strength in the lower and upper limbs, respectively [29]. Jumping distance was assessed using a standing broad jump test, measured to the nearest 1.0 cm. Handgrip strength was measured to the nearest 0.1 kg using a digital handgrip dynamometer (Takei TTK 5401/5101). Each child had two attempts per test and the maximum value of both attempts was considered for our analysis.

Assessment of fat-free mass

FFM (kg) was used as a proxy for skeletal muscle mass, which has been reported to be positively associated with bone strength [30, 31]. It was calculated based on height (Stadiometer SECA 225), weight, and leg-to-leg bioelectrical impedance (both measured with Tanita scale BC420 MA) using the Tyrrell formula [46]. As height and weight are strongly correlated with FFM, we did not consider either of them as an adjustment variable. In the current analysis, on the one hand, the association of FFM with SI was examined without considering PA behaviour. On the other hand, the association between PA behaviour and SI was additionally controlled for FFM, which is in accordance with previous studies [7-9].

Assessment of co-variables

The consumption of milk and dairy products (MDP) was considered as an indicator for calcium intake and estimated based on the habitual consumption frequency of milk, yoghurt, and cheese as reported by parents

using a food frequency questionnaire that was developed in the IDEFICS study [47, 48]. The response categories ranged from 'Never/less than once a week' to 'Four or more times per day' and were converted into the weekly frequency of MDP consumption.

Exposure to sunlight is the most important source for vitamin D synthesis that contributes to bone mineralization [49]. Hence, we adjusted for mean daylight duration (± 0.1 h) which was calculated for each examination month in each location, using astronomical tables [50].

Statistical analyses

The associations of PA, sedentary behaviour and muscle strength with SI were analysed using multivariate linear regression models. Data were checked for normality and linearity using residual plots. Regression analyses were conducted for each variable of PA behaviour (LPA, MPA, VPA, MVPA, average PA level, WBE, leisure time PA), sedentary behaviour (SED, screen time) and muscle strength (FFM, jumping distance, handgrip strength). Objectively measured and reported variables were analysed and presented separately. In a first model, we adjusted for age, sex and country (Model 1). The second model was additionally adjusted for FFM (unless FFM was an independent variable), MDP and daylight duration (Model 2). A third model was conducted to additionally adjust model 2 for the time of either accelerometer-based SED or MVPA, or respective reported PA/ sedentary behaviours (Model 3). Thus, except for the average PA level, each independent variable was additionally adjusted as follows: the *PA intensities LPA, MPA, VPA and MVPA* were each adjusted for SED; *SED* was adjusted for MVPA; *variables for muscle strength* for average PA level; *screen time* for reported leisure time PA; and *leisure time PA and WBE* for reported screen time. In school children, we additionally adjusted model 3 for jumping distance and handgrip strength (Model 4). Except for the model for average PA level, all models that included accelerometer data were adjusted for valid wearing time of the accelerometer. To allow better interpretation of the regression coefficients, accelerometer-based variables were converted as follows: average PA level as 100 cpm, SED and LPA as hours/day and MPA, VPA and MVPA as 10 min/day.

Analyses were conducted for boys and girls together, since no moderating effect of sex on the association between PA and SI was detected. Regression models were stratified for preschool (2- < 6 years) and school children (6-10 years). This was decided due to the lack of evidence in children younger than six years, and the lack of fitness data in preschool children. Furthermore, previously published age-, sex-, and height-specific SI percentile values based on the IDEFICS sample indicated a

negative age-trend of SI in preschool children and a positive age-trend in school children [28]. The apparent decline of SI in preschool age may be explained by the increased growth velocity in early childhood, where bone turnover processes may not have fully compensated for growth [51].

Based on the described models, we performed sensitivity analyses with accelerometer data using 15 s epochs that were not available for all children ($N = 3519$).

Level of significance was set at $\alpha = 0.05$. Analyses were performed using SAS 9.3 (SAS Institute Inc., Cary, NC, USA).

Results

Study sample characteristics

The characteristics of the study sample are shown in Table 1. Differences in mean SI by age and sex were negligible. Preschool and school children wore the accelerometer on average 11.5 and 12.2 h per day, respectively. The accelerometer-based average PA levels were slightly higher in preschool compared to school children. The mean time spent in LPA, MPA and VPA as well as the reported leisure time PA were similar for both age groups. School children were more engaged in WBE, but also reached a higher mean of SED and reported screen time compared to preschool children. In both age groups, boys had slightly higher mean values in all PA variables, except LPA and SED, as well as a slightly higher reported screen time. Finally, compared to school girls, school boys had slightly higher mean values in the fitness tests.

Tables 2 and 3 present the results of models 1-4 for objectively and subjectively assessed variables, respectively. The explained variance of SI by PA, sedentary behaviour and muscle strength was about 18-19 % in preschool and 24-27 % in school children, which was consistent throughout the models. Regression coefficients were not or only slightly reduced by adjustment for FFM, MDP and daylight duration (model 2), PA, or respectively sedentary behaviour (model 3) and muscle strength (model 4).

PA behaviour and SI

We observed a positive association of accelerometer-based PA levels with SI in preschool ($\beta = 0.92$, $p < .001$) and in school children ($\beta = 1.02$, $p < .001$). When classified into PA intensities and based on model 3, our results suggest that a 10 min increase in MPA per day would lead to an about 0.8 unit higher SI in both age groups ($p \leq .001$). With the same increase in VPA, the association with SI was about 1.6-2-fold as high as the association between MPA and SI in preschool ($\beta = 1.22$, $p = 0.05$) and school children ($\beta = 1.58$, $p < .001$). LPA

Table 1 Characteristics of preschool (2- < 6 years) and school (6–10 years) children, stratified by sex

	Preschool children (2- < 6 years)			Primary school children (6–10 years)		
	Boys	Girls	All	Boys	Girls	All
	Mean ± SD	Mean ± SD	Mean ± SD	Mean ± SD	Mean ± SD	Mean ± SD
Number	804	708	1512	1409	1544	2953
Age (years)	4.4 ± 0.9	4.5 ± 0.9	4.4 ± 0.9	8.1 ± 1.2	8.1 ± 1.2	8.1 ± 1.2
<i>Anthropometric measures</i>						
Bone stiffness index	79.3 ± 14.6	79.8 ± 15.5	79.5 ± 15.0	82.1 ± 12.5	80.5 ± 11.7	81.3 ± 12.1
Body height (cm)	116.0 ± 9.8	114.7 ± 9.4	115.4 ± 9.7	135.2 ± 9.0	134.7 ± 9.1	135.0 ± 9.0
Body weight (kg)	21.8 ± 5.4	21.1 ± 4.9	21.5 ± 5.2	32.5 ± 8.7	32.1 ± 8.3	32.3 ± 8.5
Fat-free mass (kg)	15.7 ± 3.6	13.9 ± 3.3	14.9 ± 3.6	23.1 ± 4.1	21.3 ± 4.0	22.2 ± 4.1
<i>Objectively measured PA and sedentary behaviours</i>						
Sedentary time (hours/day)	4.4 ± 1.5	4.5 ± 1.4	4.4 ± 1.5	5.6 ± 1.5	5.7 ± 1.5	5.7 ± 1.5
Light PA (hours/day)	6.4 ± 1.0	6.4 ± 1.0	6.4 ± 1.0	5.8 ± 1.1	5.8 ± 1.1	5.8 ± 1.1
Moderate PA (min/day)	38 ± 18	29 ± 14	34 ± 17	39 ± 19	29 ± 14	34 ± 17
Vigorous PA (min/day)	7 ± 7	6 ± 5	6 ± 6	9 ± 8	7 ± 6	8 ± 7
Moderate-to-vigorous PA (min/day)	45 ± 23	35 ± 18	40 ± 21	48 ± 25	36 ± 18	42 ± 23
PA levels (cpm)	653 ± 171	586 ± 147	622 ± 164	579 ± 169	507 ± 139	541 ± 158
Wearing time (average hours/day)	11.6 ± 1.7	11.4 ± 1.7	11.5 ± 1.7	12.2 ± 1.7	12.1 ± 1.7	12.2 ± 1.7
<i>Measures of muscle strength</i>						
Jumping distance (cm)				121 ± 25	114 ± 25	117 ± 25
Handgrip strength (kg)				14.4 ± 3.9	13.2 ± 3.5	13.8 ± 3.7
<i>Potential confounding lifestyle factors</i>						
Dairy products (frequency/week)	22 ± 12	21 ± 11	21 ± 12	20 ± 12	19 ± 12	20 ± 12
Daylight duration (hours/week)	11.0 ± 2.8	10.8 ± 2.6	10.9 ± 2.7	10.8 ± 2.6	10.7 ± 2.6	10.7 ± 2.6
<i>Reported PA and sedentary behaviours</i>						
<i>Continuous variables</i>						
Leisure time PA (hours/week)	17.8 ± 10.0	17.6 ± 9.8	17.7 ± 9.9	18.9 ± 9.8	17.2 ± 9.7	18.0 ± 9.8
Screen time (hours/week)	12.2 ± 7.0	10.6 ± 6.3	11.4 ± 6.7	15.2 ± 8.1	13.3 ± 7.2	14.2 ± 7.7
<i>Categorical variable</i>						
High-to-moderate WBE	182 (22.6)	222 (31.4)	404 (26.7)	822 (58.3)	817 (52.9)	1639 (55.5)
No-impact WBE / no exercise	622 (77.4)	486 (68.6)	1108 (73.3)	587 (41.7)	727 (47.1)	1314 (44.5)

cpm average counts per minute, N number, PA physical activity, WBE weight-bearing exercises, SD standard deviation

showed no clear association with SI in both age groups (see Table 2).

Considering reported PA, we observed higher SI values of about 2.6 units for preschool ($p = 0.003$) and 1.7 units for school children ($p < .001$) who participated in WBE compared to those performing no WBE or no exercise at all. In contrast, for leisure time PA, we observed a 0.07 ($p = 0.047$) and 0.05 unit ($p = 0.020$) increase in SI for an additional hour per week in preschool and school children, respectively (see Table 3).

Sedentary behaviour and SI

Accelerometer-based SED was negatively associated with SI in preschool and school children. After adjusting for

MVPA (Model 3), the association between SED and SI was reduced by about 50 % in preschool ($\beta_{\text{Model2}} = -0.73$, $p = 0.008$ versus $\beta_{\text{Model3}} = -0.37$, $p = 0.28$) and 45 % school children ($\beta_{\text{Model2}} = -0.77$, $p > .001$ versus $\beta_{\text{Model3}} = -0.42$, $p = 0.015$). No association was found between the reported screen time and SI.

Muscle strength and SI

In preschool children, FFM was negatively associated with SI ($\beta = -0.40$, $p = 0.001$). In school children on the other hand, FFM and muscle strength were positively associated with SI. In the latter, an additional kg of FFM corresponded to a 0.5 unit ($p < .001$) higher SI. Furthermore, every 10 cm increase in jumping distance and

Table 2 Multivariate linear regression investigating the association of accelerometer-based PA data with SI, by age group

	Model 1			Model 2			Model 3 ^a			Model 4		
	Adjusted for age, sex, country			Model 1 + adjusted for FFM, MDP, daylight duration			Model 2 + adjusted for either PA or/and sedentary time			Model 3 + adjusted for muscle strength		
	β	p value	R ² (%)	β	p value	R ² (%)	β	p value	R ² (%)	β	p value	R ² (%)
Preschool children (N = 1512)												
Sedentary time (hour/day)	-0.84	0.010	17.9	-0.73	0.008	18.6	-0.37	0.28	19.1			
Light PA (hour/day)	0.11	0.77	17.5	-0.05	0.89	18.3	-0.47	0.26	18.6			
Moderate PA (per 10 min/day)	0.76	<.001	18.1	0.83	<.001	19.0	0.75	0.003	19.1			
Vigorous PA (per 10 min/day)	1.23	0.047	17.7	1.37	0.027	18.6	1.22	0.05	18.8			
MVPA (per 10 min/day)	0.59	0.001	18.1	0.65	<.001	19.0	0.58	0.003	19.0			
PA levels (per 100 cpm)	0.96	<.001	18.3	0.92	<.001	19.0						
FFM (kg) ^b	-0.41	<.001	17.9	-0.40	0.001	18.2	-0.40	<.001	19.0			
School children (N = 2953)												
Sedentary time (hour/day)	-0.60	<.001	24.1	-0.77	<.001	25.9	-0.42	0.015	27.0	-0.44	0.011	27.2
Light PA (hour/day)	0.26	0.17	23.8	0.43	0.025	25.5	0.004	0.98	25.9	0.09	0.69	26.3
Moderate PA (per 10 min/day)	0.81	<.001	24.8	0.94	<.001	26.7	0.83	<.001	26.8	0.78	<.001	27.1
Vigorous PA (per 10 min/day)	1.61	<.001	24.6	1.74	<.001	26.3	1.58	<.001	26.7	1.43	<.001	26.9
MVPA (per 10 min/day)	0.65	<.001	24.9	0.73	<.001	26.8	0.66	<.001	26.9	0.61	<.001	27.2
PA level (per 100 cpm)	0.84	<.001	24.7	1.02	<.001	26.7				0.96	<.001	27.0
FFM (kg)	0.44	<.001	25.3	0.45	<.001	25.3	0.50	<.001	26.7	0.41	<.001	27.0
Jumping distance (10 cm)	0.41	<.001	24.2	0.35	<.001	25.7	0.27	0.005	26.9			
Handgrip strength (kg) ^b	0.41	<.001	24.9	0.20	0.013	25.5	0.18	0.021	26.9			

cpm average counts per minute, FFM fat-free-mass, MDP milk and dairy products, MVPA moderate-to-vigorous physical activity, PA physical activity
^aIn Model 3, the independent variables were (in addition to Model 2) adjusted as follows: sedentary time: moderate and vigorous PA; light PA, moderate PA, vigorous PA and MVPA: sedentary time; musculoskeletal fitness and FFM: PA level; PA level: no additional adjustment for other accelerometer-based variables
^bIn Model 2, FFM was adjusted for MDP and daylight duration

Table 3 Multivariate linear regression investigating the association of reported PA data with SI, by age group

	Model 1			Model 2			Model 3 ^a			Model 4			
	Adjusted for age, sex, country			Model 1 + adjusted for FFM, MDP, daylight duration			Model 2 + adjusted for either PA or SB			Model 3 + adjusted for muscle strength			
	β	p value	R ²	β	p value	R ²	β	p value	R ²	β	p value	R ²	
Preschool children (N = 1512)													
Screen time (hours/week)	-0.07	0.22	17.4	-0.04	0.50	18.2	-0.04	0.50	18.4				
Leisure time PA (hours/week)	0.07	0.048	17.5	0.07	0.05	18.4	0.07	0.047	18.4				
WBE	Impact WBE	2.26	0.009	17.7	2.59	0.003	18.7	2.57	0.003	18.7			
Reference: no exercise/WBE													
School children (N = 2953)													
Screen time (hours/week)	0.002	0.92	23.7	-0.01	0.63	25.3	-0.01	0.54	25.5	-0.01	0.85	25.8	
Leisure time PA (hours/week)	0.05	0.023	23.8	0.05	0.019	25.5	0.05	0.020	25.5	0.04	0.037	25.8	
WBE	Impact WBE	1.73	<.001	24.2	1.67	<.001	25.7	1.66	<.001	25.7	1.49	<.001	26.0
Reference: no exercise/WBE													

PA physical activity, WBE weight-bearing exercise
^aIn Model 3, the independent variables were (in addition to Model 2) adjusted as follows: screen time: leisure time PA; leisure time PA and WBE: screen time

every 1 kg increase in handgrip strength resulted in a 0.3 ($p = 0.005$) or 0.2 units ($p = 0.021$) higher SI, respectively.

Discussion

This study provides quantitative evidence on the association of objectively measured PA and sedentary time as well as of muscle strength with SI based on a large sample of 2–10-year-old children.

Overall, especially high-impact PA such as WBE, which are mostly of high intensities, i.e. VPA, substantially contributed to a higher SI already from preschool age, while no such effect was found for LPA. The observed association of high-impact PA with SI in preschool and school children was comparable. Our data indicate a decline of the osteogenic effect of PA with decreasing intensity. While 10 min of additional VPA per day lead to an almost 2 % higher SI, the same increase in MPA showed a 1 % higher SI. In addition, our results indicate, that MVPA partially reduces the adverse effect of SED on SI.

Previous observational studies support our findings that time spent in VPA appears to be more strongly associated with indicators of bone strength in children than time spent in LPA, MPA or MVPA [9, 52]. Furthermore, our results show similar associations as found in studies that examined the impact of MVPA and VPA on bone mineral content (BMC) or density (BMD). For instance, the Southampton Women's Survey, the only study found involving 4-year-old children, observed a 1.4 % higher BMC for 10 min of additional MVPA per day [5]. The Iowa study reported that, in 5-year-old children, an extra 10 min in VPA per day lead to a 3 % higher BMC. In 9–10-year-old children from the European Youth Heart Study, additional 10 min of VPA were associated with a 1–2 % higher BMD [9]. According to Kriemler et al., a change of 1.8–2.8 % in bone mass by PA or exercise intervention may be of relevance [8]. Following Kriemler et al., our results suggest that at least an additional 10 min in VPA or 20 min in MPA per day would be necessary to achieve a relevant increase in SI. However, it should be kept in mind that SI is more an indicator for bone strength than bone mass [34]. Nevertheless, on the one hand, such an increase in SI would be more realistic and relevant for children who have not reached their optimum SI for age and sex [28]. On the other hand, we hypothesize that the osteogenic effect in children who already perform high PA levels may reach a plateau after a certain time spent in these intensities. This would be an interesting issue to examine in a longitudinal perspective.

A stronger effect of MVPA or VPA on BMC in boys than in girls has been reported in previous studies [6–9]. For instance, comparing the highest tertile of VPA (72 min/day) to the lowest tertile (22 min/day), Kriemler

et al. observed a 0.19 g difference of BMC in girls and a 1.22 g difference in boys. That is a 6-fold higher effect in boys than in girls [8]. Similarly, in the longitudinal perspective of the Iowa study, Janz et al. found that an additional 30 min of MVPA per day at age 5 lead to a 4.5 and 6.7 % higher BMC in girls and boys at age 8, respectively. That is an almost 50 % higher BMC accrual in boys compared to girls [6]. The researchers explained this sex-difference due to higher PA levels in boys [6, 8, 12]. Likewise, the boys in our study spent on average more time in MVPA than girls. Although we have found no moderating effect of sex on the association between PA and SI, we performed a sensitivity analysis stratified by sex, which was based on Model 3. The association of MVPA and VPA with SI was only slightly stronger in boys than in girls. For every additional 10 min in MVPA per day we observed an about 66 % higher increase SI in boys ($\beta = 0.48$, $p < .001$) compared to girls ($\beta = 0.29$, $p = 0.06$). For the same increase in VPA, boys had only a 19 % higher increase SI compared to girls ($\beta_{\text{boys}} = 1.25$, $p < .001$ vs. $\beta_{\text{girls}} = 1.05$, $p = 0.025$). On the one hand, a 66 % higher increase SI in boys is in line with the reported sex-difference from the Iowa study [6]. On the other hand, a 0.2 unit higher increase in SI for additional 10 min in MVPA, i.e. a 1.2 unit higher SI increase for an additional hour in MVPA appears to be a negligible sex-difference. Although our results do not indicate any sex-difference, previous studies suggested that boys might potentially have a higher genetically determined responsiveness of bones to PA and exercise compared to girls. However, until today there is no evidence of this in children [8].

Contrary to objectively measured PA, reported leisure time PA was only weakly associated with SI in our study. School children whose parents reported 4 h more in leisure time PA per week, i.e. approximately 30 min more leisure time PA per day, only showed a 0.3–0.4 % higher SI. The weaker association between reported PA and bone indices compared to objectively assessed PA is consistent with findings from the Iowa study [53]. However, we observed a strong positive association between subjectively assessed WBE and SI. Preschool and school children whose parents reported participation in WBE had a 3.2 and 2.0 % higher SI, respectively compared to children that did not participate in WBE or exercise at all. The beneficial impact of WBE on bone development already in preschool age was observed in a 12-month randomized intervention trial conducted in U.S. by Specker et al. (2004, $N = 161$). In the study, 3–5-year-old children who participated in a gross activity group (bone-loading and large muscle exercises) had greater increases in BMC and BA compared to those who participated in the fine motor activity group (non-bone loading activities) [54]. This observed osteogenic effect

of objectively assessed WBE is in line with our results concerning parental-reported WBE. We conclude that both, objectively measured PA as well as reported WBE, appear to be valuable indicators to investigate dose-response relationships of the impact of PA on bone.

The osteogenic effect of high-impact PA such as WBE has been proven in many school-based intervention programs involving jumping exercises. A 3–8 % higher BMC was observed in children who participated in such programs lasting 7–9 months for at least three times per week compared to their peers who did not [13–15, 17]. Taking into account the reported periods of those school-based intervention programs, a dose-response effect of WBE on bone accrual can be suggested [2, 12–14, 18]. This suggestion is partly in line with the current WHO guidelines that recommend bone-strengthening exercises on at least three days a week [20]. However, there is a lack of evidence regarding the optimal dose of habitual PA for an adequate skeletal development in children. Our results indicate a positive association of MPA and especially of VPA with SI, although the prevalence of children who spent the recommended 60 min per day in MVPA was only about 20 % (see Table 4). In a case-control study, embedded in the IDEFICS project, we have observed that children who spent less than 30 min in MVPA per day, i.e. less than 4.2 % of their total PA, did have a 70 % increased risk for a low SI compared to children who spent more than 46 min per day, i.e. more than 6.7 % of their total PA in MVPA [55]. The latter result suggests that 30 min MVPA per day is not sufficient for an optimal SI. However, the optimal dose of habitual PA as well as of specific WBE programmes and their sustainable effect on bone accrual needs to be further investigated in longitudinal studies including intervention programs [15].

Our data support the beneficial osteogenic effect of muscle strength in school children. Currently, there are heterogeneous findings regarding the mediating role of muscle strength on the association between PA and SI [1, 8, 16]. After controlling for muscle strength, we only

observed a slightly reduced association of MPA and VPA with SI. This may be due to the fact that jumping distance and handgrip strength may not measure muscle strength as accurately as other isokinetic methods (e.g. ISOMED 2000). However, the latter methods are used in the laboratory and are not feasible to measure muscle strength in children [56, 57]. Jumping distance and handgrip strength have been observed to be good proxies for muscle strength in the lower and upper limbs assessed in field studies [29]. Another explanation for the slightly reduced association of MPA and VPA with SI after controlling for muscle strength is due to the collinearity of PA and muscle strength. Since higher levels of PA should in general lead to stronger muscles it is difficult to disentangle the effect of muscular forces and the effect of physical impact caused by WBA on bone development.

Considering FFM as an indicator for skeletal muscle mass, our results confirm a positive association with SI only in school children [8]. In preschool age, FFM was negatively associated with SI. This may be explained by the contribution of the higher proportion of organ tissues and the reduced proportion of skeletal muscle mass to FFM in early life [30, 58]. Furthermore, we calculated FFM accounting for height, a variable that was recently reported to be negatively associated with SI in preschool age [28]. Thus, the negative association between SI and FFM we observed indicates that FFM is not a suitable indicator for skeletal muscle mass in preschool children.

The application of QUS in large-scale studies in children is scarce. The few studies that used QUS mostly applied different devices, assessed PA using questionnaires or examined adolescents [25, 59–61]. This limits comparability with our findings. Only the ChiBS study applied the same QUS device as the one used in our study and assessed PA intensities by accelerometry, using the same cut-offs, but set at 15 s epochs. In this study, a negative association of SED and a positive association of VPA with SI among 6–12-year-old children was observed [25]. These results support our findings.

While the strength of this study lies in the large sample size, the wide age range of children, and the application of parent-reported and objectively assessed PA, the interpretation of our data must consider the cross-sectional design.

We are aware of the limitation regarding the sub-optimal application of the accelerometer in our study. The minimum wearing time of three consecutive days for at least six hours per day may result in an underestimation of the true time a child spent in PA [5, 8, 53]. Nevertheless, the average wearing time per day was 11–12 h. Furthermore, the advantage of assessing VPA in children by using 15 s epochs has been reported previously [62]. Shorter epochs that vary below 15 s may better

Table 4 Prevalence (%) of preschool (2- < 6 years) and school (6–10 years) children, who reached the World Health Organization (WHO) recommendation (2011) of 60 min/day moderate-to-vigorous physical activity (MVPA^a, stratified by sex)

	Preschool children			Primary school children		
	Boys N = 804	Girls N = 708	All N = 1512	Boys N = 1402	Girls N = 1535	All N = 2937
Prevalence (%) of children spending ≥ 60 min/day MVPA ^a	25.0	10.3	18.1	30.6	10.5	20.1

^aMVPA based on the cut-off values proposed by Evenson (published by Trost et al., 2011) [42]

collect short and sporadic activity bouts that correspond to the natural activity pattern of a child [7, 23]. However, our sensitivity analyses revealed 43 and 16 % weaker associations between accelerometer-based PA and SI in preschool and school children, respectively, when using 15 s epochs compared to 60s epochs, taking the smaller sample size into account. Finally, due to the limited number of available accelerometers in the IDEFICS study, only 50 % of all children wore an accelerometer. However, preschool ($N=1731$) and primary school children ($N=1791$) who did not wear an accelerometer had comparable data on SI (preschool: 82.5 ± 16.3 , primary school: 80.3 ± 12.5), reported leisure time PA (preschool: 17.3 ± 10.4 h/week, primary school: 18.8 ± 10.8 h/week) and screen time (preschool: 11.3 ± 6.7 h/week, primary school: 14.7 ± 7.5 h/week) compared to those who did (see Table 1).

The validity of the variable WBE is limited, because this information has been parental reported and does not include WBE during leisure time outside of a sports club. Thus, WBE may be underestimated. All the more remarkable is that we observed a strong association between WBE and SI in children.

Another limitation is the missing fitness data in preschool children that hindered us from comparing the impact of muscle strength on SI between preschool and school age.

Furthermore, the calculated variable daylight may not be the best proxy for the child's exposure to sunlight, since a child may spend the entire time in doors and therefore not be exposed to sunlight.

Finally, we cannot be sure whether all children were pre-pubertal since no information on maturity stages was available. To rule out the positive effect of oestrogens on the bone's sensitivity to PA in older girls, we performed sensitivity analysis in girls younger than 9 years and observed similar associations between PA and SI [18].

Conclusion

Our findings suggest that the association between accelerometer-based PA and QUS-based bone indices may contribute towards determining potential dose-response relationships in children. This finding should be taken into consideration when planning further large-scale studies. Our study highlights the importance of high-impact and intense PA rather than light PA for optimizing SI, as a proxy for bone strength in 2–10-year-old children. The participation in WBE, or respectively 10–20 min of extra MPA and VPA per day appear to be sufficient for a relevant increase in SI.

Abbreviations

ALPHA: Assessing Levels of Physical Activity; BMC: Bone mineral content; BMD: Bone mineral density; ChiBS: Children's body composition and stress; cpm: Counts per minute; FFM: Fat-free mass; IDEFICS: Identification and

prevention of dietary- and lifestyle- induced health effects in children and infants; LPA: Light physical activity; MDP: Milk and dairy products; MPA: Moderate physical activity; MVPA: Moderate-to-vigorous physical activity; PA: Physical activity; s: Seconds; SAS: Statistical analysis software; SB: Sedentary behaviour; SED: Sedentary time; SI: Bone stiffness; VPA: Vigorous physical activity; WBE: Weight-bearing exercises; WHO: World Health Organization.

Competing interests

The authors declare that they have no competing interests.

Authors' contributions

Authors' role: Study design: WA, SM, TV, DM, and YP. Study conduct and data collection: All authors. Data analysis, interpretation, and drafting manuscript: DH, CB, and WA. DH, CB, and WA take responsibility for the integrity of the data analysis. All authors read, revised, and approved the final manuscript.

Acknowledgements

This work was performed as part of the IDEFICS study (www.ideficsstudy.eu). We gratefully acknowledge the financial support of the European community within the Sixth RTD Framework Programme (FOOD, Grant n°: 016181). Isabelle Sioen is financially supported by the Research Foundation - Flanders (Grant n°: 1.2.683.14.N.00). We also thank Florence Samkange-Zeeb for proof-reading the manuscript and language editing.

Author details

¹Department of Epidemiological Methods and Etiological Research, Leibniz Institute for Prevention Research and Epidemiology - BIPS, Achterstr. 30, 28359 Bremen, Germany. ²Department of Biometry and Data Management, Leibniz Institute for Prevention Research and Epidemiology - BIPS, Achterstr. 30, 28359 Bremen, Germany. ³Department of Public Health, Ghent University, 4K3, De Pintelaan 185, 9000 Ghent, Belgium. ⁴Research and Education Institute of Child Health, 138 Limassol Ave, #205, 2015 Strovolos, Cyprus. ⁵Department of Paediatrics, Queen Silvia Children's Hospital, University of Gothenburg, Rondvägen 15, 41685 Gothenburg, Sweden. ⁶Department of Pediatrics, Medical Faculty, University of Pecs, Jozsef A. u. 7, 7623 Pecs, Hungary. ⁷GENUD (Growth, Exercise, Nutrition and Development) Research Group, University of Zaragoza, C/Domingo Miral s/n, 50009 Zaragoza, Spain. ⁸Centre for Sport and Exercise Science and Medicine (SESAME), University of Brighton, Welkin House, 30 Carlisle Road, Eastbourne BN20 7SN, UK. ⁹Institute of Food Sciences, National Research Council, Via Roma 64, 83100 Avellino, Italy. ¹⁰Department of Chronic Diseases, Centre of Behavioural and Health Sciences, National Institute for Health Development, Hiiu 42, 11619 Tallinn, Estonia. ¹¹Faculty of Mathematics and Computer Science, Bremen University, Bibliothekstraße 1, 28359 Bremen, Germany.

Received: 25 March 2015 Accepted: 29 August 2015

Published online: 17 September 2015

References

1. Tan VP, Macdonald HM, Kim S, Nettlefold L, Gabel L, Ashe MC, et al. Influence of physical activity on bone strength in children and adolescents: a systematic review and narrative synthesis. *J Bone Miner Res*. 2014;29(10):2161–81. doi:10.1002/jbmr.2254.
2. Herrmann D, Hebestreit A, Ahrens W. Impact of physical activity and exercise on bone health in the life course: a review. *Bundesgesundheitsblatt Gesundheitsforschung Gesundheitsschutz*. 2012;55(1):35–54. doi:10.1007/s00103-011-1393-z.
3. Nilsson M, Sundh D, Ohlsson C, Karlsson M, Mellstrom D, Lorentzon M. Exercise during growth and young adulthood is independently associated with cortical bone size and strength in old Swedish men. *J Bone Miner Res*. 2014;29(8):1795–804. doi:10.1002/jbmr.2212.
4. Rizzoli R, Bianchi ML, Garabedian M, McKay HA, Moreno LA. Maximizing bone mineral mass gain during growth for the prevention of fractures in the adolescents and the elderly. *Bone*. 2010;46(2):294–305. doi:10.1016/j.bone.2009.10.005.
5. Harvey NC, Cole ZA, Crozier SR, Kim M, Ntani G, Goodfellow L, et al. Physical activity, calcium intake and childhood bone mineral: a population-based cross-sectional study. *Osteoporos Int*. 2012;23(1):121–30. doi:10.1007/s00198-011-1641-y.

6. Janz KF, Letuchy EM, Eichenberger Gilmore JM, Burns TL, Torner JC, Willing MC, et al. Early physical activity provides sustained bone health benefits later in childhood. *Med Sci Sports Exerc.* 2010;42(6):1072–8. doi:10.1249/MSS.0b013e3181c619b2.
7. Tobias JH, Steer CD, Mattocks CG, Riddoch C, Ness AR. Habitual levels of physical activity influence bone mass in 11-year-old children from the United Kingdom: findings from a large population-based cohort. *J Bone Miner Res.* 2007;22(1):101–9. doi:10.1359/jbmr.060913.
8. Kriemler S, Zahner L, Puder JJ, Braun-Fahrländer C, Schindler C, Farpour-Lambert NJ, et al. Weight-bearing bones are more sensitive to physical exercise in boys than in girls during pre- and early puberty: a cross-sectional study. *Osteoporos Int.* 2008;19(12):1749–58. doi:10.1007/s00198-008-0611-5.
9. Cardadeiro G, Baptista F, Ornelas R, Janz KF, Sardinha LB. Sex specific association of physical activity on proximal femur BMD in 9 to 10 year-old children. *PLoS One.* 2012;7(11), e50657. doi:10.1371/journal.pone.0050657.
10. Janz KF, Letuchy EM, Burns TL, Eichenberger Gilmore JM, Torner JC, Levy SM. Objectively measured physical activity trajectories predict adolescent bone strength: Iowa Bone Development Study. *Br J Sports Med.* 2014;48(13):1032–6. doi:10.1136/bjsports-2014-093574.
11. Janz KF, Burns TL, Torner JC, Levy SM, Paulos R, Willing MC, et al. Physical activity and bone measures in young children: the Iowa bone development study. *Pediatrics.* 2001;107(6):1387–93.
12. Macdonald HM, Kontulainen SA, Khan KM, McKay HA. Is a school-based physical activity intervention effective for increasing tibial bone strength in boys and girls? *J Bone Miner Res.* 2007;22(3):434–46. doi:10.1359/jbmr.061205.
13. Meyer U, Romann M, Zahner L, Schindler C, Puder JJ, Kraenzlin M, et al. Effect of a general school-based physical activity intervention on bone mineral content and density: a cluster-randomized controlled trial. *Bone.* 2011;48(4):792–7. doi:10.1016/j.bone.2010.11.018.
14. Gunter K, Baxter-Jones AD, Mirwald RL, Almstedt H, Fuller A, Durski S, et al. Jump starting skeletal health: a 4-year longitudinal study assessing the effects of jumping on skeletal development in pre and circum pubertal children. *Bone.* 2008;42(4):710–8. doi:10.1016/j.bone.2008.01.002.
15. Daly RM. The effect of exercise on bone mass and structural geometry during growth. *Med Sport Sci.* 2007;51:33–49. doi:10.1159/000103003.
16. Bass SL, Eser P, Daly R. The effect of exercise and nutrition on the mechanostat. *J Musculoskelet Neuronal Interact.* 2005;5(3):239–54.
17. McKay HA, Petit MA, Schütz RW, Prior JC, Barr SL, Khan KM. Augmented trochanteric bone mineral density after modified physical education classes: a randomized school-based exercise intervention study in prepubescent and early pubescent children. *J Pediatr.* 2000;136(2):156–62.
18. Petit MA, McKay HA, MacKelvie KJ, Heinenon A, Khan KM, Beck TJ. A randomized school-based jumping intervention confers site and maturity-specific benefits on bone structural properties in girls: a hip structural analysis study. *J Bone Miner Res.* 2002;17(3):363–72. doi:10.1359/jbmr.2002.17.3.363.
19. Schoenau E, Frost HM. The “muscle-bone unit” in children and adolescents. *Calcif Tissue Int.* 2002;70(5):405–7. doi:10.1007/s00223-001-0048-8.
20. World Health Organization (WHO). Global recommendations on physical activity for health. Recommended levels of physical activity for children aged 5–17 years. 2015. http://www.who.int/dietphysicalactivity/factsheet_young_people/en/. Accessed March 2015.
21. Konstabel K, Veidebaum T, Verbestel V, Moreno LA, Bammann K, Tornaritis M, et al. Objectively measured physical activity in European children: the IDEFICS study. *Int J Obes (Lond).* 2014;38 Suppl 2:S135–43. doi:10.1038/ijo.2014.144.
22. Basterfield L, Jones AR, Parkinson KN, Reilly J, Pearce MS, Reilly JJ, et al. Physical activity, diet and BMI in children aged 6–8 years: a cross-sectional analysis. *BMJ Open.* 2014;4(6), e005001. doi:10.1136/bmjopen-2014-005001.
23. Ekelund U, Tomkinson G, Armstrong N. What proportion of youth are physically active? Measurement issues, levels and recent time trends. *Br J Sports Med.* 2011;45(11):859–65. doi:10.1136/bjsports-2011-090190.
24. Heidemann M, Molgaard C, Husby S, Schou AJ, Klakk H, Moller NC, et al. The influence of physical activity influences bone mineral accrual in childhood: the childhood health, activity and motor performance school (the CHAMPS) study. *Denmark BMC Pediatr.* 2013;13:32. doi:10.1186/1471-2431-13-32.
25. De Smet S, Michels N, Polfliet C, D’Haese S, Roggen I, De Henauw S et al. The influence of dairy consumption and physical activity on ultrasound bone measurements in Flemish children. *J Bone Miner Metab.* 2014. doi:10.1007/s00774-014-0577-7.
26. Gracia-Marco L, Rey-Lopez JP, Santaliestra-Pasias AM, Jimenez-Pavon D, Diaz LE, Moreno LA, et al. Sedentary behaviours and its association with bone mass in adolescents: the HELENA Cross-Sectional Study. *BMC Public Health.* 2012;12:971. doi:10.1186/1471-2458-12-971.
27. Vicente-Rodriguez G, Ortega FB, Rey-Lopez JP, Espana-Romero V, Blay VA, Blay G, et al. Extracurricular physical activity participation modifies the association between high TV watching and low bone mass. *Bone.* 2009;45(5):925–30. doi:10.1016/j.bone.2009.07.084.
28. Herrmann D, Intemann T, Lauria F, Marild S, Molnár D, Moreno LA, et al. Reference values of bone stiffness index and C-terminal telopeptide in healthy European children. *Int J Obes (Lond).* 2014;38 Suppl 2:S76–85. doi:10.1038/ijo.2014.138.
29. Ruiz JR, Castro-Pinero J, Espana-Romero V, Artero EG, Ortega FB, Cuenca MM, et al. Field-based fitness assessment in young people: the ALPHA health-related fitness test battery for children and adolescents. *Br J Sports Med.* 2011;45(6):518–24. doi:10.1136/bjsm.2010.075341.
30. Dorsey KB, Thornton JC, Heymsfield SB, Gallagher D. Greater lean tissue and skeletal muscle mass are associated with higher bone mineral content in children. *Nutr Metab (Lond).* 2010;7:41. doi:10.1186/1743-7075-7-41.
31. Ká K, Rousseau MC, Lambert M, O’Loughlin J, Henderson M, Tremblay A, et al. Association between lean and fat mass and indicators of bone health in prepubertal caucasian children. *Horm Res Paediatr.* 2013;80(3):154–62. doi:10.1159/000354043.
32. Ahrens W, Bammann K, Siani A, Buchecker K, De Henauw S, Iacoviello L, et al. The IDEFICS cohort: design, characteristics and participation in the baseline survey. *Int J Obes (Lond).* 2011;35 Suppl 1:S3–15. doi:10.1038/ijo.2011.30.
33. Bammann K, Peplies J, Pigeot I, Ahrens W. IDEFICS: a multicenter European project on diet- and lifestyle-related disorders in children. *Med Klin.* 2007;102(3):230–5. doi:10.1007/s00063-007-1027-2.
34. Baroncelli GI. Quantitative ultrasound methods to assess bone mineral status in children: technical characteristics, performance, and clinical application. *Pediatr Res.* 2008;63(3):220–8. doi:10.1203/PDR.0b013e318163a286.
35. Trimpou P, Bosaeus I, Bengtsson BA, Landin-Wilhelmsen K. High correlation between quantitative ultrasound and DXA during 7 years of follow-up. *Eur J Radiol.* 2010;73(2):360–4. doi:10.1016/j.ejrad.2008.11.024.
36. Krieg MA, Barkmann R, Gonnelli S, Stewart A, Bauer DC, Del Rio Barquero L, et al. Quantitative ultrasound in the management of osteoporosis: the 2007 ISCD Official Positions. *J Clin Densitom.* 2008;11(1):163–87. doi:10.1016/j.jocd.2007.12.011.
37. Sioen I, Goemare S, Ahrens W, De Henauw S, De Vriendt T, Kaufman JM, et al. The relationship between paediatric calcaneal quantitative ultrasound measurements and dual energy X-ray absorptiometry (DXA) and DXA with laser (DXL) as well as body composition. *Int J Obes (Lond).* 2011;35 Suppl 1:S125–30. doi:10.1038/ijo.2011.44.
38. Sioen I, Mouratidou T, Herrmann D, De Henauw S, Kaufman JM, Molnár D, et al. Relationship between markers of body fat and calcaneal bone stiffness differs between preschool and primary school children: results from the IDEFICS baseline survey. *Calcif Tissue Int.* 2012;91(4):276–85. doi:10.1007/s00223-012-9640-3.
39. Van den Bussche K, Michels N, Gracia-Marco L, Herrmann D, Eiben G, De Henauw S, et al. Influence of birth weight on calcaneal bone stiffness in Belgian preadolescent children. *Calcif Tissue Int.* 2012;91(4):267–75. doi:10.1007/s00223-012-9636-z.
40. Hawkinson J, Timins J, Angelo D, Shaw M, Takata R, Harshaw F. Technical white paper: bone densitometry. *J Am Coll Radiol.* 2007;4(5):320–7. doi:10.1016/j.jacr.2007.01.021.
41. Lee KY, Macfarlane DJ, Cerin E. Comparison of three models of actigraph accelerometers during free living and controlled laboratory conditions. *Eur J Sport Sci.* 2013;13(3):332–9. doi:10.1080/17461391.2011.643925.
42. Trost SG, Loprinzi PD, Moore R, Pfeiffer KA. Comparison of accelerometer cut points for predicting activity intensity in youth. *Med Sci Sports Exerc.* 2011;43(7):1360–8. doi:10.1249/MSS.0b013e318206476e.
43. Burdette HL, Whitaker RC, Daniels SR. Parental report of outdoor playtime as a measure of physical activity in preschool-aged children. *Arch Pediatr Adolesc Med.* 2004;158(4):353–7. doi:10.1001/archpedi.158.4.353.
44. De Miguel-Etayo P, Gracia-Marco L, Ortega FB, Intemann T, Foraita R, Lissner L, et al. Physical fitness reference standards in European children: the IDEFICS study. *Int J Obes (Lond).* 2014;38 Suppl 2:S57–66. doi:10.1038/ijo.2014.136.
45. Meredith MD, Welk GJ. Fitnessgram-actiogram test administration manual. Champaign, IL, USA: Human Kinetics; 2007.

46. Tyrrell VJ, Richards G, Hofman P, Gillies GF, Robinson E, Cutfield WS. Foot-to-foot bioelectrical impedance analysis: a valuable tool for the measurement of body composition in children. *Int J Obes Relat Metab Disord*. 2001;25(2):273–8. doi:10.1038/sj.jjo.0801531.
47. Lanfer A, Hebestreit A, Ahrens W, Krogh V, Sieri S, Lissner L, et al. Reproducibility of food consumption frequencies derived from the Children's Eating Habits Questionnaire used in the IDEFICS study. *Int J Obes (Lond)*. 2011;35 Suppl 1:S61–8. doi:10.1038/ijo.2011.36.
48. Huybrechts I, Boernhorst C, Pala V, Moreno LA, Barba G, Lissner L, et al. Evaluation of the Children's Eating Habits Questionnaire used in the IDEFICS study by relating urinary calcium and potassium to milk consumption frequencies among European children. *Int J Obes (Lond)*. 2011;35 Suppl 1:S69–78. doi:10.1038/ijo.2011.37.
49. Cranney A, Horsley T, O'Donnell S, Weiler H, Puil L, Ooi D et al. Effectiveness and safety of vitamin D in relation to bone health. *Evid Rep Technol Assess (Full Rep)*. 2007(158):1–235.
50. Timeanddate.com. <http://www.timeanddate.com/>. Accessed March 2015.
51. Hermanussen M. *Auxology. Studying human growth and development*. XIth ed. Stuttgart, Germany: Schweizerbart Science Publishers; 2013.
52. Sayers A, Mattocks C, Deere K, Ness A, Riddoch C, Tobias JH. Habitual levels of vigorous, but not moderate or light, physical activity is positively related to cortical bone mass in adolescents. *J Clin Endocrinol Metab*. 2011;96(5):E793–802. doi:10.1210/jc.2010-2550.
53. Janz KF, Medema-Johnson HC, Letuchy EM, Burns TL, Gilmore JM, Torner JC, et al. Subjective and objective measures of physical activity in relationship to bone mineral content during late childhood: the Iowa Bone Development Study. *Br J Sports Med*. 2008;42(8):658–63. doi:10.1136/bjism.2008.047779.
54. Specker B, Binkley T, Fahrenwald N. Increased periosteal circumference remains present 12 months after an exercise intervention in preschool children. *Bone*. 2004;35(6):1383–8. doi:10.1016/j.bone.2004.08.012.
55. Herrmann D, Pohlabein H, Gianfagna F, Konstabel K, Lissner L, Marild S, et al. Association between bone stiffness and nutritional biomarkers combined with weight-bearing exercise, physical activity, and sedentary time in preadolescent children. A case-control study. *Bone*. 2015;78:142–9. doi:10.1016/j.bone.2015.04.043.
56. Riederer F, Kusters A, Wiesinger HP, Dorn U, Hofstaedter T, Fink C, et al. Alpine Skiing With total knee ArthroPlasty (ASWAP): muscular adaptations. *Scand J Med Sci Sports*. 2015;25 Suppl 2:26–32. doi:10.1111/sms.12451.
57. Duzgun I, Baltaci G, Colakoglu F, Tunay VB, Ozer D. The effects of jump-rope training on shoulder isokinetic strength in adolescent volleyball players. *J Sport Rehabil*. 2010;19(2):184–99.
58. Hsu A, Heshka S, Janumala I, Song MY, Horlick M, Krasnow N, et al. Larger mass of high-metabolic-rate organs does not explain higher resting energy expenditure in children. *Am J Clin Nutr*. 2003;77(6):1506–11.
59. Novotny R, Daida YG, Grove JS, Acharya S, Vogt TM, Paperny D. Adolescent dairy consumption and physical activity associated with bone mass. *Prev Med*. 2004;39(2):355–60. doi:10.1016/j.ypmed.2004.01.031.
60. Cvijetic S, Baric IC, Bolanca S, Juresa V, Ozegovic DD. Ultrasound bone measurement in children and adolescents. Correlation with nutrition, puberty, anthropometry, and physical activity. *J Clin Epidemiol*. 2003;56(6):591–7.
61. Babaroutsis E, Magkos F, Manios Y, Sidossis LS. Lifestyle factors affecting heel ultrasound in Greek females across different life stages. *Osteoporos Int*. 2005;16(5):552–61. doi:10.1007/s00198-004-1720-4.
62. Rowlands AV, Ingledew DK, Powell SM, Eston RG. Interactive effects of habitual physical activity and calcium intake on bone density in boys and girls. *J Appl Physiol* (1985). 2004;97(4):1203–8. doi:10.1152/jappphysiol.00182.2004.

Submit your next manuscript to BioMed Central and take full advantage of:

- Convenient online submission
- Thorough peer review
- No space constraints or color figure charges
- Immediate publication on acceptance
- Inclusion in PubMed, CAS, Scopus and Google Scholar
- Research which is freely available for redistribution

Submit your manuscript at
www.biomedcentral.com/submit

